

Manuscript Central™ Version 3.4.1 includes six new functional enhancements which primarily focus on the Editor Assignment and Recommendation/Decision-making process. Additional details for each of the new features, including a functional description and screenshots, are provided in subsequent pages.

Editor Assignment Enhancements

Ref #	Feature Description	Default Setting	Default Value
1	Enhancements to Editor Search	Active	Keyword display available to be deactivated by ScholarOne
2	Enhancements to Editor selection via dropdown	Active	Not Applicable
3	Ability to have multiple "Unassign Editor" and "Assign a Different Editor" e-mail templates; overdue timer reset when a new editor is assigned	Inactive	Available to be configured by the journal

Recommendation / Decision Enhancements

Ref #	Feature Description	Default Setting	Default Value
4	Display changes to the "Reviews" and "Recommendations" tables	Active	Not Applicable
5	Ability to assign reviewers after an immediate decision is rescinded	Active	Not Applicable

Other Enhancements

Ref #	Feature Description	Default Setting	Default Value
6	DTD Changes	Active	Not Applicable

1. Enhancements to Editor Search

Business Need: When assigning Editors, Editors-in-Chief and journal staff need the ability to quickly determine a potential Editor's suitability to review by looking at their keywords and workloads.

Feature: The Editor assignment search results will now contain the user's keywords as selected as part of their user profile. Also, the number of current assignments in the Editor search results is now linked to a popup listing the details of the Editor's current assignments (Figure 1).

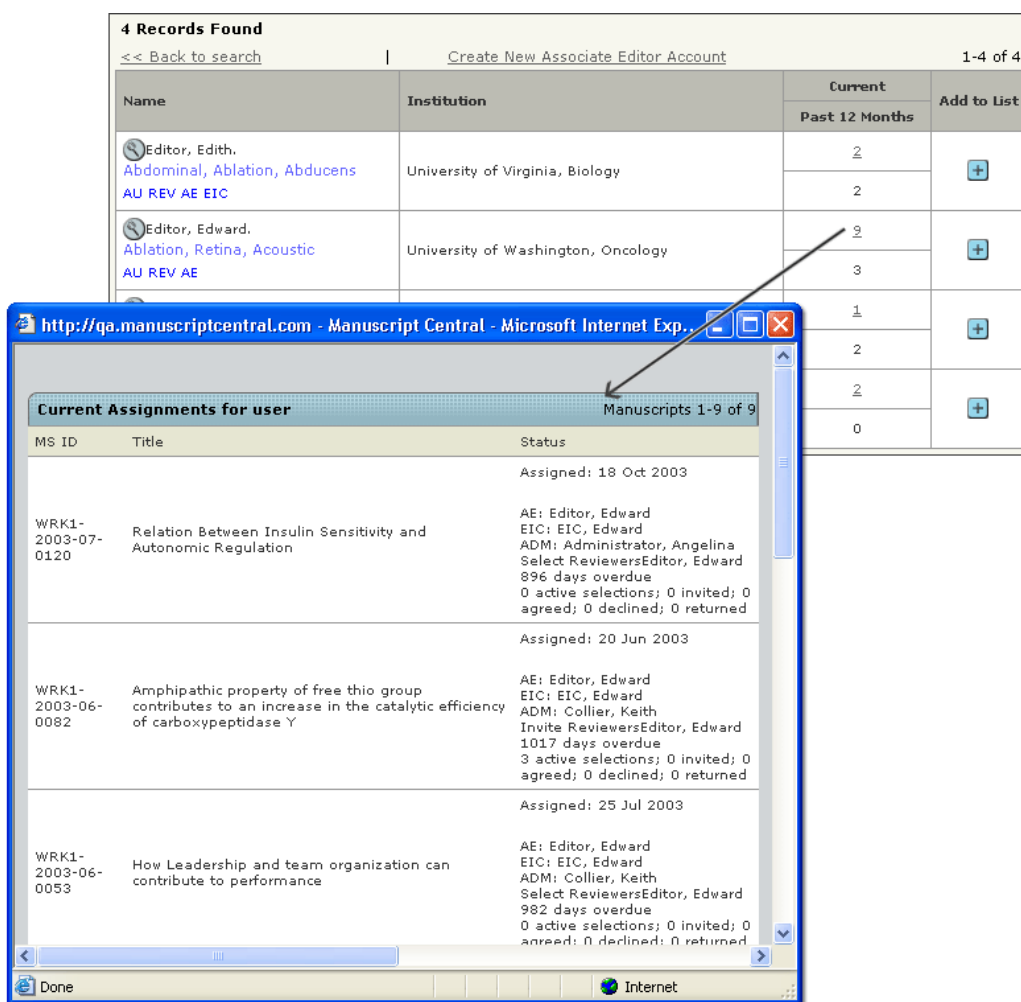


Figure 1. Editor assignment search results and current assignments

2. Enhancements to Editor selection via dropdown

Business Need: When assigning Editors by selecting them from a dropdown, Editors-in-Chief and journal staff need the ability to view the potential Editors' workloads and account/activity details.

Feature: The Editor selection dropdown now displays the number of manuscripts currently assigned to each person. In addition, users can also view the Editor's details by selecting them from the dropdown and clicking the "View Details" button (Figure 2).

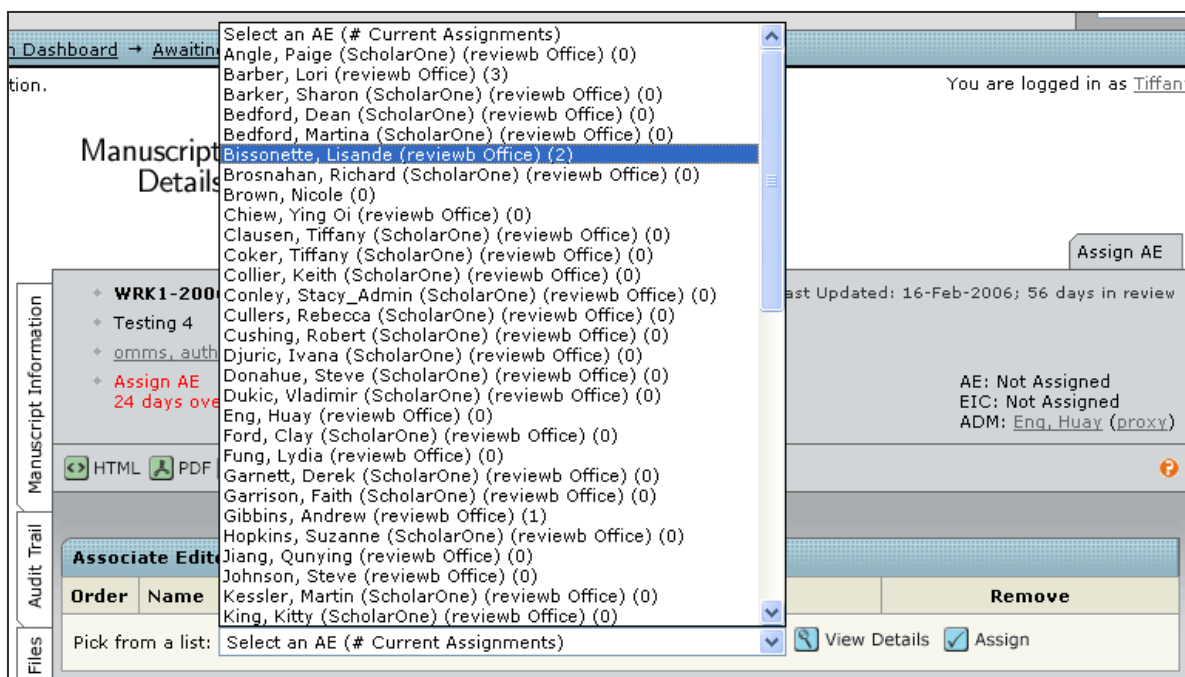


Figure 2. Editor Selection via dropdown

3. Ability to have multiple “Unassign Editor” and “Assign a Different Editor” e-mail templates; reset overdue timer

Business Need: Journals with multiple tiers of Editors require the ability to customize the e-mails that are available when a new Editor is assigned based on the Editor’s role. In addition, the due date for the new Editor should be calculated based on the date they were assigned to the manuscript.

Feature: Journal administrators can now configure multiple templates for the “Unassign Editor” and “Assign a Different Editor” e-mail events. When multiple templates are configured, the user re-assigning an Editor will be able to select the appropriate template from a dropdown in the e-mail window (Figure 3). In addition, Manuscript Central will now re-calculate the due date based on the date the new Editor was assigned.

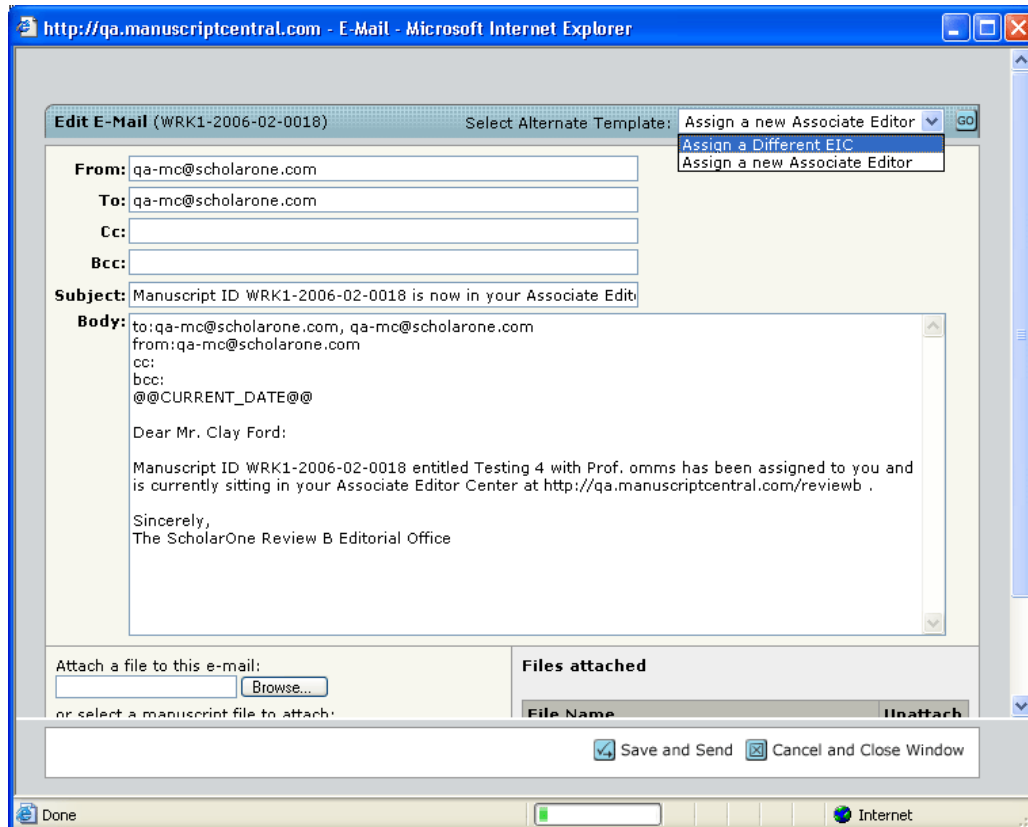




Figure 3. Ability to select between multiple templates when assigning a new Editor

4. Display changes to the “Reviews” and “Recommendations” tables

Business Need: When making a recommendation or decision, Editors need to quickly identify if any of the submitted reviews came from one of the author’s preferred or non-preferred reviewers. In addition, Editors need to quickly view the reviewers’ recommendations and reviews.

Feature: Preferred and non-preferred reviewers will be flagged throughout the peer review process. Users viewing the Reviewer List and “Reviews” table (Figure 4), will now be able to quickly identify the author’s preferred or non-preferred reviewers. In addition, the link to view the completed review forms is clearly designated—the “view review” link replaces the  icon.




Reviews	
# reviews required to make decision	<input type="text" value="1"/>
 <u>Barber, Lori</u> pref	<ul style="list-style-type: none">• Major Revision• view review• rescind
 <u>Bissonette, Lisande</u> pref	<ul style="list-style-type: none">• not yet submitted (due: 12 May 2006) 
<input checked="" type="checkbox"/> Save	

Figure 4. “Reviews” table

5. Ability to assign reviewers after an immediate decision is rescinded

Business Need: Journals need the ability to re-start the peer review process when an immediate decision is rescinded.

Feature: When an immediate decision is rescinded, journals will now have the option of either making a new decision or sending the manuscript through the peer review process.

6. DTD Changes

Business Need: Clients have requested DTD changes as a result of new features and production needs.

Feature: The Manuscript Central v3.4.1 release will include DTD updates. Details of these changes as well as a sample export were provided—we encourage journals to review the list of changes made to the DTD to insure that their production exports will continue to work smoothly after the release.